



THE COUNCIL ON FOOD,  
AGRICULTURAL AND  
RESOURCE ECONOMICS  
2016 ANNUAL REPORT

Catalyzing Informed Decisions Through Applied Economics





## Contents

About the Council on Food, Agricultural and Resource Economics.....	3
C-FARE’s Mission.....	3
C-FARE’s Goals.....	3
Core Values .....	3
C-FARE Serves and Supports the Agricultural and Applied Economics Profession .....	4
Facilitating Webinars, Seminars, and Briefings on Timely Topics .....	4
Monitoring Federal Policy-making Activities .....	4
Engaging Federal Stakeholders and Decision Makers .....	4
Nominating Members of the Profession for Policy Advisory Board/Panel Positions.....	4
Providing Information to Students and Young Professionals.....	4
C-FARE Events.....	5
Dynamics of Farm Profitability: Factors Influencing the Decline in Farm Income .....	5
Creating the Future Workforce in Food, Agriculture, and Natural Resources .....	5
Climate Change and Agriculture: Revisiting the Evidence and Potential Solutions.....	6
U.S.-Cuba Agricultural Trade: Economic Policy Implications of a Changing Trade Environment .....	6
Jon Brandt Public Policy Forum 2016.....	7
The Economics of Managing Drought: Policy Evaluation and Water Markets .....	7
Agricultural Statistics Board Lockup .....	8
Advancing U.S. Agricultural Competitiveness with Big Data and Agricultural Economic Market Information, Analysis, And Research .....	8
Agricultural and Applied Economics Priorities and Solutions Workshop.....	8
Priorities and Solutions Webinar Series.....	9
Annual Intern Breakfast Series.....	9
The Bio-economy: Technological and Policy Path Forward Workshop.....	10
Fall Agricultural Economics Reception.....	10
Advancing U.S. Agricultural Competitiveness with Big Data and Agricultural Economic Market Information, Analysis, and Research Webinar.....	11
Forum of Scientific Society Leaders on Genetically Engineered Crops: Experiences and Prospects .....	11
C-FARE Communications and Governance.....	12
C-FARE Board Restructure.....	12
2016 C-FARE Board of Directors.....	13
C-FARE’s 2016 Sponsors.....	14
Agricultural and Applied Economics Departments.....	15

## About the Council on Food, Agricultural and Resource Economics

C-FARE is a non-profit organization that promotes the work of applied economists and serves as a catalyst for incorporating economic thinking into the analysis of food, agricultural, and resource decisions. We serve as a conduit between the academic research community and Washington, DC policy makers and agency personnel, matching expertise to public needs. Incorporated in 1993, C-FARE is based in Washington, DC and is governed by a board of applied economists representing a wide range of public and private sector interests. C-FARE is a tax-exempt organization under Section 501(c)(3) of the IRS code.

### C-FARE's Mission

The mission of the Council on Food, Agricultural and Resource Economics (C-FARE) is to enhance the effectiveness of the food, agricultural, resource, and related economic sectors by strengthening the national presence of the agricultural and applied economics profession and its policy-relevant research.

### C-FARE's Goals

C-FARE's Board has adopted a set of goals to serve the needs of the profession. These goals guide the daily actions and activities that C-FARE undertakes to achieve its mission.

**GOAL 1:** Advance the role of agricultural and applied economists in identifying and informing research and policy issues.

**GOAL 2:** Significantly increase the understanding that public, policy-making, and federal program audiences have of the value of food, agricultural, resource, and applied economics information and analysis.

**GOAL 3:** Maintain and increase resources and opportunities that support agricultural and applied economics research, outreach, and education

**GOAL 4:** Foster opportunities that build human capital for a vibrant national workforce equipped with the skills that are necessary to inform private and public economic

### Core Values

**Collaboration:** C-FARE advances the applied economics profession through its continuous development of effective communication pathways that connect the profession to users of food, agricultural, natural resource, and applied economics information and analysis.

**Excellence:** C-FARE distills authoritative economic analysis from the agricultural and applied economics profession into information that communicates effectively with its critical audiences.

**Integrity:** C-FARE is guided by the highest level of objectivity.

**Innovation:** C-FARE identifies and facilitates innovative analyses and engagement.

**Relevance:** C-FARE's actions are timely, proactive, and responsive to critical issues.

## C-FARE Serves and Supports the Agricultural and Applied Economics Profession



### **Facilitating Webinars, Seminars, and Briefings on Timely Topics**

C-FARE develops webinars, seminars, and briefings. These activities are designed to inform and/or train stakeholders on the application of economics relevant to current policy issues or legislative initiatives. C-FARE's activities highlight the strengths of economic analysis in multi-disciplinary research and education.



### **Monitoring Federal Policy-making Activities**

C-FARE monitors and reports on budgets, bills, legislation, rule-making, and initiatives under discussion in the federal policy-making arena. C-FARE also develops public comments that encourage federal policy makers and program managers to incorporate applied economic analyses in program development, policy implementation, and requests for research.



### **Engaging Federal Stakeholders and Decision Makers**

C-FARE volunteer experts regularly meet with decision makers to provide information on the importance of economic research, extension, and education, and the value of many federal data series.



### **Nominating Members of the Profession for Policy Advisory Board/Panel Positions**

Advisory boards and panels offer opportunities for the profession to broaden its influence. C-FARE seeks to enhance the presence of food, agricultural, and resource economists on key federal advisory boards.



### **Providing Information to Students and Young Professionals**

C-FARE's intern briefings and informational updates help support the professional growth of the next generation of applied economists. At the briefings, speakers talk about their backgrounds, skills, and academic experience. Experts elaborate on experiences and skills they've found necessary to build a career in the private, public, or non-profit sectors in Washington, DC.



## C-FARE Events

### Dynamics of Farm Profitability: Factors Influencing the Decline in Farm Income

February 11, 2016

Moderator: Caron Gala, C-FARE Executive Director

- Jeffrey Hopkins, Farm Economy Branch Chief in the Resource and Rural Economics Division (RRED) at the USDA Economic Research Service
- Allen Featherstone, Professor and Head of the Department of Agricultural Economics at Kansas State University and Director of Master in Agribusiness Program
- Ani Katchova, Associate Professor in the Department of Agricultural, Environmental, and Development Economics and Farm Income Enhancement Chair in The Ohio State University

#### Sponsors

Council on Food, Agricultural and Resource Economics

Agricultural & Applied Economics Association

**IMPACT:** Reached over 60 staffers and over 50 online viewers. Allen Featherstone was invited to testify before Congress because of his presentation.



Picture 1. Chairman Roberts (R-KS), Allen Featherstone, and Ani Katchova talking about farm income

### Creating the Future Workforce in Food, Agriculture, and Natural Resources

#### Board on Agriculture and Natural Resources Workshop

February 10, 2016

The workshop focused on how to develop a sustainable pipeline of analytical experts for the agricultural, food, and natural resource workforce.

Representatives:

- Ani Katchova, Associate Professor in the Department of Agricultural, Environmental, and Development Economics and Farm Income Enhancement Chair at The Ohio State University
- Clare Narrod, Risk Analysis Program Manager/Impact Evaluation Project Lead Joint Institute for Food Safety and Applied Nutrition
- Caron Gala, C-FARE Executive Director

#### Sponsors

Council on Food, Agricultural and Resource Economics

# Climate Change and Agriculture: Revisiting the Evidence and Potential Solutions

February 14, 2016

Moderator: Jan Lewandrowski, U.S. Department of Agriculture

- Thomas Hertel, Purdue University - [The Underlying Climate Mechanisms of International Food Trade](#)
- Bruce McCarl, Texas A&M University - [Elaborations on Climate Adaptation in U.S. Agriculture](#)
- Alison Eagle, Duke University - [Climate Change Mitigation and U.S. Agriculture: Promises, Preemption, and Pathways](#)



## Sponsors

Council on Food, Agricultural and Resource Economics  
Agricultural & Applied Economics Association

**IMPACT:** This was the first time that C-FARE or AAEA had a designated program specifically on agricultural and applied economics at the AAAS meetings.

# U.S.-Cuba Agricultural Trade: Economic Policy Implications of a Changing Trade Environment

March 22, 2016

Moderator: Zhulieta Z. Willbrand, Central and South America Team Leader at USDA Foreign Agricultural Service

- Bryce Cooke, Economist at the USDA Economic Research Service
- William A. Messina, Jr., Agricultural Economist, University of Florida/IFAS, Food and Resource Economics Department
- Luis A. Ribera, Associate Professor and Extension Economist for Texas A&M University



## Sponsors

Council on Food, Agricultural and Resource Economics  
National Coalition for Food and Agriculture Research  
Agricultural & Applied Economics Association  
USDA Economists Group

**IMPACT:** Reached over 100 staff, DC agency experts, and media. The Hagstrom Report had an article on the webinar. William and Luis engaged congressional staff on the topic of trade.



Picture 2 William speaking to congressional staff during Q&A.

## Jon Brandt Public Policy Forum 2016

### Reaping Returns from U.S. Investment in International Agricultural Development

April 27, 2016

The event highlighted state-of-the-art knowledge of market development, policy, and research innovation investments in international agricultural development. Panelists described how broad-based economic growth in low-income countries can alleviate poverty, improve food security, and increase capacity for international trade. Speakers reviewed the domestic and international impacts of research and development partnerships forged between USAID, the U.S. Department of Agriculture, public universities, and the private sector.

Opening Comments – Alan Bjerga, Bloomberg

- **Keith Fuglie, USDA Economic Research Service** - Investing in Innovation to Raise Agricultural Productivity in Developing Countries
- **Timothy J. Dalton, Kansas State University** - U.S. Investments in Innovation: What are the Impacts Around the World?
- **Titus Awokuse, Michigan State University** - Economic Pathways Out of Food Insecurity: Options for Market and Policy Development
- **Robert Bertram, Chief Scientist in USAID's Bureau for Food Security** - USAID Feed the Future Program Markets and Policy Research

#### Sponsors

Council on Food, Agricultural and Resource Economics  
Agricultural & Applied Economics Association

**IMPACT:** Over 90 congressional staff attended the event. Speakers met with the Chairman of the U.S. Senate Committee on Agriculture, Nutrition, and Forestry.

## The Economics of Managing Drought: Policy Evaluation and Water Markets

July 11, 2016

Researchers conveyed findings on the trade-offs of policies that emphasize the supply and demand sides of water allocation and use, as well as those that promote adaptation and consider consumer behaviors. Research-based ideas were presented about how to manage the application of new technologies to adapt to long-term and persistent drought. The speakers presented on the work that land-grant universities and the United States Department of Agriculture (USDA) have collaborated on through various programs, forecasting, and monitoring efforts.

Opening Remarks: Robert Johansson, USDA Chief Economist

- Steven Wallander, Economist at the USDA Economic Research Service
- Ariel Dinar, Resource Economist, University of California, Riverside



Picture 3. Ariel Dinar speaking to congressional staff at the briefing.

#### Sponsors

Council on Food, Agricultural and Resource Economics, National Coalition for Food and Agriculture Research, Agricultural & Applied Economics Association, and USDA Economists Group

**IMPACT:** Reached over 100 staff, DC agency experts, and media. Ariel met with staff from his entire California delegation as well as Representative Ken Calvert. There was significant interest in Ariel's webinar and slides.



## Agricultural Statistics Board Lockup

July 12, 2016

As part of the Friends of Agricultural Statistics and Analysis, which includes friends of agricultural economics research, C-FARE invites congressional staff to join the Agricultural Statistics Board (ASB) for its annual "Lockup." During this process, the ASB prepares and disseminates hundreds of reports every year that provide the official USDA estimates on crops, livestock, and economic indicators for the agricultural industry. These market-sensitive reports are compiled and issued under special security conditions, which are known as Lockup.

### Sponsors

Council on Food, Agricultural and Resource Economics  
Friends of Agricultural Statistics and Analysis

**IMPACT:** Participating in this important process helps members of the public understand the process of developing quality statistics for agricultural markets and the sensitivities that surround that process.



## Advancing U.S. Agricultural Competitiveness with Big Data and Agricultural Economic Market Information, Analysis, And Research Agricultural and Applied Economics Priorities and Solutions Workshop

July 2016



This workshop was the centerpiece of a strategic-visioning project to identify the agricultural and applied economics priorities for solving global challenges. The workshop participants from academia, government, NGOs, and industry represented their colleagues in developing a consensus regarding the most important research questions, educational approaches, and anticipated outcomes.

The objectives of this project were to accomplish the following:

- Identify overarching priorities for agricultural and applied economics research and education in order to address society's challenges over the next decade.
- Promote communication among agricultural and applied economists about the priorities for developing new research projects, research methods, and curricula to meet the future needs of society.
- Communicate to policy makers in Congress and federal agencies about the key needs and priorities for research and education in agriculture and applied economics.
- Influence the availability of funding for the identified priorities of research and education.
- Articulate the unique role of agricultural and applied economists in working with other disciplines to respond to the challenges facing society.
- Identify the educational needs for future agricultural and applied economists and develop new and innovative curricula to meet those needs.

### Sponsors

Council on Food, Agricultural and Resource Economics and the Agricultural & Applied Economics Association

## Priorities and Solutions Webinar Series

May – June 2016

The project then continued with a webinar series with the following speakers:

- James Vercammen: We have the Econometric Tools but Where is the Data?
- Keith Coble: Agricultural Production and Policy
- Jayson L. Lusk: Consumer and Food Issues
- Madhu Khanna: Water, Land, Ecosystems, and Environmental Policy: Research Priorities and Challenge
- Will Martin: Agricultural Development: An International Perspective
- Mike D. Woods: Rural Community Development: Regional Issues and Quality of Life

All presentations can be viewed on [C-FARE's YouTube Channel](#).

### Sponsors

Council on Food, Agricultural and Resource Economics  
Agricultural and Applied Economics Association



## Annual Intern Breakfast Series

The Council on Food, Agricultural and Resource Economics (C-FARE) invited students with an interest in agricultural and applied economics who were interning in Washington, D.C. this summer to participate in our 2016 Summer Intern Breakfast Briefings.

The briefing series focused on how to navigate careers working for Congress, U.S. agencies, industry, and non-governmental organizations. These briefings are designed to allow students to hear about the careers of professionals who've received a degree in agricultural, natural resources, or applied economics. Participants also receive insights on what it takes to succeed in Washington, D.C.



### Sponsors

Council on Food, Agricultural and Resource Economics  
Agricultural & Applied Economics Association  
USDA Economists Group

**IMPACT:** Over 300 interns signed up for the events in Washington, DC. We hosted over 150 for these breakfasts. At the breakfasts, interns interacted with each other and the expert speakers.

# The Bio-economy: Technological and Policy Path Forward Workshop

September 30 – October 1



Picture 4. Irene Xiarchos presenting at the afternoon seminar

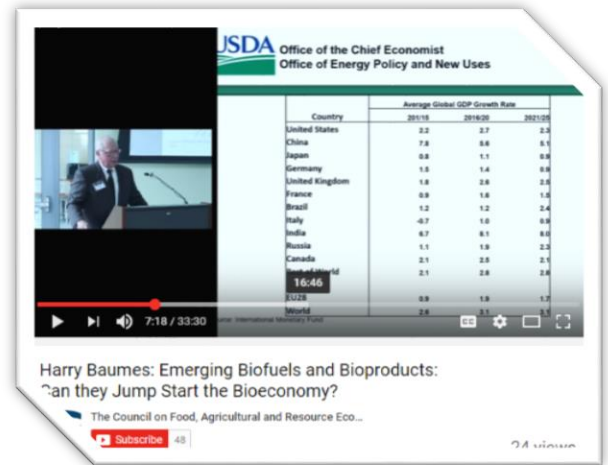
The workshop provided an opportunity for engagement in the development of the bio-economy. The workshop encouraged the advancement of efficient use of renewable aquatic and terrestrial biomass resources to stimulate the production and manufacture of renewable bioenergy and plant-based products.

Presentations can be viewed on [C-FARE's YouTube Channel](#)

### Sponsors

Council on Food, Agricultural and Resource Economics  
 USDA National Institute of Food and Agriculture

Rutgers Energy Institute



## Fall Agricultural Economics Reception

October 13, 2016

The fall reception, held at The Monocle, honored the work of agricultural industry economists. The reception provided economists working in the agriculture sector with an update on congressional activity as well as information on crops and other reports.

Master of Ceremony: John Newton of the American Farm Bureau Federation (AFBF)

Speakers:

- Matt Erickson, Chief Economist, U.S. Senate Committee on Agriculture, Nutrition, and Forestry
- Bart Fischer, Chief Economist, U.S. House Committee on Agriculture
- Lance Honig, Crops Branch Chief, National Agricultural Statistics Service

### Sponsors

Council on Food, Agricultural and Resource Economics  
 National Association of State Departments of Agriculture  
 American Farm Bureau Federation

## Advancing U.S. Agricultural Competitiveness with Big Data and Agricultural Economic Market Information, Analysis, and Research Webinar

November 18, 2016

C-FARE recently released a report, *Big Ag. Data*, which examines big ag data's potential challenges and opportunities, as well as future research questions and approaches for extension and outreach. See the executive summary of the paper [here](#). View the full report [here](#). Three of the coauthors – Keith Coble (Mississippi State University, Department of Agricultural Economics), Terry Griffin (Kansas State University, Department of Agricultural Economics), and Jonathan McFadden (USDA-Economic Research Service) – discussed varying aspects of big ag data highlighted in the report during the webinar. The webinar is available on [C-FARE's YouTube channel](#).

### Sponsors

Council on Food, Agricultural and Resource Economics  
Economic Research Service



## Forum of Scientific Society Leaders on Genetically Engineered Crops: Experiences and Prospects

December 7, 2016



Representatives of more than 12 scientific societies met to explore the findings, conclusions, and recommendations of the report, *Genetically Engineered Crops: Experiences and Prospects*, which was released earlier this year. Former AAEA President and C-FARE representative Jill McCluskey and AAEA member Carl Pray were in attendance and presented. The report has quickly become one of the most popular reports from the National Academies, having been downloaded more than 25,000 times since May. In addition to commenting on the reports' conclusions and recommendations, panelists explored how the report might be used in the society's academic education and public communication activities.

## C-FARE Communications and Governance

In 2016, C-FARE had 300 Twitter followers, 325 Facebook likes, and 2,300 subscribers to our newsletter. C-FARE is bolstering its agricultural and applied economics community and DC stakeholder presence by strengthening its digital communications.

### C-FARE Board Restructure

The C-FARE Board of Directors has engaged two expert consultants, the volunteer community, and leaders of key institutions. The goal of these discussions was to create a governance structure that engaged the community and would have long-term institutional success. In December 2016, the C-FARE board voted to institute a new governance structure, commencing in 2017. As a result, the C-FARE Board of Directors, from March 2017 forward, will contain eleven voting members. The board will have one executive committee and four standing committees. The full structure is as follows:

**Executive Committee:** The Executive Committee consists of the Past Chair, Chair, Vice-Chair, Treasurer and Secretary. This committee provides guidance, oversight, and support to ensure high-quality operations of the board, including all actions committed on behalf of the board by members and committees. The committee ascertains that the entire board receives highly qualified and motivated new members, participates in the training of those members, organizes and activates committees, and ensures high quality board meetings.

**Finance and Audit:** The Finance and Audit Committee is chaired by the Treasurer, another Board member serves as a Vice-Chair, and the Past Chair of the Board serves on the committee. This standing committee has the following responsibilities:

- Establish annual budgets and targets for fundraising;
- Review annual audits on behalf of the Board;
- Review and report to the Board on quarterly and annual financial results; and
- Provide risk analysis and contingency planning.

**Associate Members and Strategic Partners Committee:** The committee advises C-FARE on topics, issues, and opportunities for informal educational programming to promote the work of the agricultural and applied economics profession. This committee's main activity is to reach out to current stakeholders to coordinate input for C-FARE's annual program planning.

**Program Committee:** The Program Committee membership includes diverse expertise and a range of early career to experienced professionals. It has the following responsibilities:

- Identify programs in accordance with the budget for the annual work plan.
- Consider input from the Associate Members and Strategic Partners Committee, and other organizations and individuals as appropriate or necessary.

**Communications Committee:** The objective of the Communications Committee is to build and enhance communication between the C-FARE Board of Directors, potential new strategic partners, and the agricultural and applied economics community in general. This includes outreach and C-FARE membership recruitment of departments, regional associations, and other national applied economics associations. The committee is tasked with developing valuable communication approaches to keep volunteers connected with C-FARE. Annually, C-FARE Staff will work with the committee to develop an external communications plan. The plan will be reviewed by the Board and implemented by C-FARE staff during the calendar year.

## 2016 C-FARE Board of Directors

C-FARE's governing board includes applied economists representing a wide range of public and private sector interests. We appreciate their time and expertise. These members also provide their own travel expenses to our board meetings and we appreciate their leadership and support on behalf of the profession.

### 2016 Board Members

Roger Coupal  
Chair  
[University of Wyoming](#)

Mary Ahearn  
Vice-Chair  
[ERS](#) emeritus

Steven Kraft  
Secretary-Treasurer  
[Southern Illinois University](#)

Damona Doye  
Past Chair  
[Oklahoma](#) State University

John Anderson  
[American Farm Bureau Federation](#)

Walter Armbruster  
Retired - [Farm Foundation](#)

Duncan Chembezi  
[Alabama A&M University](#)

Jerry Fletcher  
[West Virginia University](#)

Stephan Goetz  
[Penn](#) State

Paul Gottlieb  
[Rutgers](#)

Roman Keeney  
[Purdue](#)

Daniel Lass  
[U](#) of Massachusetts - Amherst

Ashok Mishra  
[Louisiana](#) State

Gene Nelson  
[Texas](#) A&M

JB Penn  
[Deere and Co.](#)

Parr Rosson  
[Texas A&M University](#)

Steve Turner  
[Mississippi State University](#)

## C-FARE's 2016 Sponsors

We would like to thank our sponsors for supporting C-FARE's operations and programs.



The Agricultural & Applied Economics Association (AAEA) Trust is the non-profit fundraising arm of AAEA. The Trust supports the work of agricultural and applied economists by funding programs and initiatives designed to advance the profession. <http://www.aaea.org/trust>



CHS Foundation is the major giving entity of CHS, an energy, grains and foods company. [www.chsfoundation.org](http://www.chsfoundation.org)



The Economic Research Service is a primary source of economic information and research in the U.S. Department of Agriculture. ERS conducts a research program to inform public and private decision making on economic and policy issues involving food, farming, natural resources, and rural development. <http://www.ers.usda.gov>



The USDA National Agricultural Statistics Service provides timely, accurate, and useful statistics and information in service to U.S. agriculture.

[www.nass.usda.gov](http://www.nass.usda.gov)



The purposes and objectives of the Southern Agricultural Economics Association shall be to foster the study and understanding of agricultural economics and its applications to problems in the Southern United States; to promote unity and effectiveness of effort among all concerned with those problems; to promote improvement in the professional competence and standards of members; to cooperate with other organizations and institutions engaged in similar or related activities; and to increase the contribution of agricultural economics to human welfare. [www.saea.org](http://www.saea.org)

## Agricultural and Applied Economics Departments

Colorado State University  
Iowa State University  
Kansas State University  
Michigan State University  
Mississippi State University  
New Mexico State University  
North Carolina State University  
Oklahoma State University  
Purdue University  
South Dakota State University  
Southern Illinois University  
Stephen F. Austin University  
Tarleton State University  
Texas A&M University  
Texas Tech University  
The Ohio State University  
University of Arizona  
University of Arkansas  
University of Connecticut  
University of Florida  
University of Georgia  
University of Idaho  
University of Illinois  
University of Kentucky  
University of Maine  
University of Massachusetts  
University of Minnesota  
University of Missouri  
University of Nebraska-Lincoln  
Utah State University  
Virginia Tech



### Contact

502 C Street, NE  
Washington, DC 20002  
202-408-8522 (phone)  
202-408-5385 (fax)  
[www.cfare.org](http://www.cfare.org)