



CSREES-USDA Report to C-FARE
Economics and Community Systems Focus
www.csrees.usda.gov

MAJOR PROGRAM ACTIVITIES

SARE: Sustainable Agriculture Research and Education (SARE): SARE will mark its 20th anniversary with a national conference March 25-27, 2008, “The New American Farm: Advancing the frontier of sustainable farming,” in Kansas City, MO. Evaluations of SARE’s past grants and planning for the next 20 years will inform the conference program, which will feature nearly 200 speakers and poster presenters from across the U.S. plus local farm tours (see www.sare.org/2008Conference/index.htm). SARE’s national outreach arm has recently published a bulletin on rangeland management strategies and revised its popular book “Managing Cover Crops Profitably,” and is working on a bulletin on “clean energy farming” to be released this fall (see www.sare.org/publications/).

RECENT ECS ACTIVITIES

Land Use Conference: The Northeast Regional Center for Rural Development, in partnership with CSREES, NASULGC, the Association for European Life Sciences Universities (formally Interuniversity Consortium for Agricultural and Related Sciences in Europe), and several land-grant universities, hosted a “Conference on the Science and Education of Land Use: A Transatlantic, Multidisciplinary and Comparative Approach,” in September 2007. Key topics included the sustainable use of natural resources, and trade-offs among alternative land uses. Additional information is available at: www.nercrd.psu.edu/TALUC/TALUC.html

AAEA—Spatial Economics Workshop: ECS, several land-grant universities and the Farm Foundation sponsored “Fundamentals of Spatial Economics,” a highly successful pre-conference workshop at the 2007 American Agricultural Economics Association meeting in Oregon (July 2007). The workshop focused on the integration of GIS technology with economic theories, and internationally renowned scholars presented research on spatial dynamic issues, such as migration-induced landscape change, amenity-driven urban/suburban development, and firm location behavior.

Outdoor Recreation Strategic Plan: CSREES is working with stakeholders nationwide to identify critical issues, needs, and opportunities in the area of outdoor recreation research and education. A National Steering Committee has reviewed the draft strategic plan. When the plan is finalized, the agency will cooperate with various professional organizations, university administrators, and other federal partners in implementing the plan to enhance knowledge and intellectual capacity in outdoor recreation for human health and well-being, community vitality, and sustainable resources and environment.

Risk Management Program Initiatives:

- Pilot Program to develop Native Americans Tax Guide specifically addressing tax requirements resulting from USDA Conservation Grants.

- Use of Computer Program for Risk Management Agency Grants Administration: The Risk Management Agency will be using the programs computer based grants management system.

- Integration of Financial Security Knowledge in Risk Management Activities: The ECS Financial Security and Risk Management Programs are cooperating to integrate financial management programs into risk management activities

Small Farms/SARE: The Small Farm program facilitates communication between Small Farm Coordinators at Land-grant universities and other professionals, from private and public sector agencies and organizations, who focus on small-scale and minority farming and ranching. A joint ECS-SARE project investigated Hispanic farming and ranching across the U.S. and the final report will be available early in FY 2008. For more information, see www.csrees.usda.gov/smallfarms.cfm or contact Patricia McAleer at 202-720-2635; pmcaleer@csrees.usda.gov

USDA's Agricultural Outlook Forum Student Diversity Program: launched in 2007, this program provides a sponsorship opportunity for junior and senior students who represent the diversity of American agriculture to attend USDA's annual Outlook Forum. ECS played a lead role in developing and promoting this program and ten students at Land Grant colleges and universities were selected to attend the 2007 Forum. Contact Antonio McLaren at 202-720-5997; amclaren@csrees.usda.gov.

eXtension (Websites on Personal Finance and Rural Entrepreneurship): Funded through state and federal dollars, and with resources from non-government partners, eXtension provides timely, science-based information and learning opportunities to people via the Internet at every hour of every day year-round. Subject matter specialists collaborate online to review existing Extension publications, create new documents, answer consumer questions, and maintain current resources. Two new websites related to economics and communities were launched in 2007. The Personal Finance website, www.extension.org/personal_finance, produced by the 'Financial Security for All' Community of Practice, provides consumers with reliable, up-to-date information to help meet day-to-day expenses while saving and investing for the future. For more information on, contact Jim Terry, jterry@csrees.usda.gov. The Entrepreneurs and Their Communities website, www.extension.org/entrepreneurship, provides business owners with unbiased information on a variety of business-related topics. For more information, contact Bo Beaulieu, ljb@srdc.msstate.edu, Director, Southern Rural Development Center, and eXtension team coordinator.

Five content areas (listed below) have been selected for development into fully functional national Communities of Practice through the state needed based model of CoP selection in 2007.

- * Living with Fire (Western Region)
<http://about.extension.org/wiki/Regional_Priority_Living_with_Fire>
- * Obesity Health and Wellness (Southern Region and 1890 Region)
<http://about.extension.org/wiki/Regional_Priority_Obesity_Health_and_Wellness>
- * Renewable Energy (North East Region)
<http://about.extension.org/wiki/Regional_Priority_Renewable_Energy>
- * Small Ruminants (1890 Region)
<http://about.extension.org/wiki/Regional_Priority_Small_Ruminants>

* Water Quality (North Central)

<http://about.extension.org/wiki/Regional_Priority_Water_Quality>

Diversity and Pluralism: CSREES continues to provide leadership for Diversity and Pluralism to the Land Grant College and University System. Diversity Across Higher Education is a community of practice in eXtension. The National Diversity Center and Change Agent States for Diversity projects will be launched as a public site on eXtension in December 2007. The Extension Committee on Organization and Policy, Personnel and Organization sub-committee continues to support the work of the National Committee on Extension Diversity. National Association of State Universities and Land Grant Colleges, Commission on Access, Diversity, and Excellence has recently partnered with ECOP to institutionalize diversity within the land grant system. Internally, CSREES trained approximately two thirds of its employees in Multi-cultural Awareness. This training has been conducted by the Michigan State University Multi-cultural Awareness team. Onion Skin Diversity Training takes the CSREES staff deeper into the issues of diversity and social justice for the staff.

NAREEE Board Presentation: ECS staff made presentations concerning REE activities supporting rural entrepreneurship to the NAREEE Board which advises the Secretary of Agriculture on policy matters.

Hatch/Evans-Allen Grants: ECS is administering approximately 680 active Hatch or Evans-Allen Grants. Annual CSREES economics funding is nearly \$49 million, the largest single funding source to the food, agricultural and resource economics profession, about 36 percent of the total.

Department Reviews: Through fall of 2007 and 2008, ECS will be involved with program reviews at the University of New Mexico, University of Minnesota, University of Arizona, and University of Nevada-Reno.

STAFFING NEWS

Secretary Mike Johanns resigned September 19, 2007. Former Deputy Secretary Chuck Conner is Acting Secretary. Governor Ed Schafer has been nominated to be the next Secretary of Agriculture.

Acting Agriculture Secretary Chuck Conner has announced the Jan 3, 2008 retirement of USDA Chief Economist Dr. Keith Collins and the appointment of Deputy Chief Economist Dr. Joseph Glauber as Acting Chief Economist. Glauber is currently on detail to the office of the U.S. Trade Representative and serving as Special Doha Agricultural Envoy. He is expected to assume the duties of Chief Economist full-time beginning in mid-December.

Ralph A. Otto is the new CSREES Associate Administrator. He has been the CSREES deputy administrator for Plant and Animal Systems since March 2002. He was appointed CSREES deputy administrator for Natural Resources and Environment in 1995. He served as the assistant deputy administrator for Extension Service's Natural Resources and Rural Development from 1990 until the CSREES merger in 1994.

Meryl C. Broussard is the new CSREES Deputy Administrator for Plant and Animal Systems. He was the Animal Systems section director for PAS since 2002. He joined the Department of

Agriculture in 1985 as the national program leader in Aquaculture, where he provided leadership in the development and implementation of major aquaculture research and extension educational programs.

Janie Simms Hipp is the new national program leader for Risk Management Education, Farm Management, and Trade Adjustment Assistance programs in Economics and Community Systems. Hipp holds the Juris Doctor degree from Oklahoma City University with specialization in agricultural law from the University of Arkansas-Fayetteville School of Law. She served the National Center for Agricultural Law Research and Information for many years and recently was on faculty with the University of Arkansas, Division of Agriculture, with the Cooperative Extension Service and the University of Arkansas-Fayetteville Agricultural Economics and Agribusiness Department. She served several years in the National Center for Agricultural Law Research and Information in Fayetteville, Arkansas. She has over 20 years experience in agricultural law in not only the academic realm, but also in private commercial litigation practice and public agency representation at the state level. She has authored numerous publications on agricultural and environmental issues, food safety, sustainable agriculture, marketing, property issues and estate planning and succession. Phone: 202-720-3605; jhipp@csrees.usda.gov

Mark R. Bailey, CSREES national program leader, Economic and Community Systems Unit, retired in July 2007. He joined USDA in 1975 and in 1992, became the program director for the Small Business Innovation Research Program, moving to the National Research Initiative in 1996. In 2000, he played a critical role in the implementation of the Initiative for the Future of Agriculture and Food Systems.

Denis Ebodaghe, National Program Leader, Small Farms, is on assignment to USDA's Office of the Assistant Secretary for Civil Rights, as Deputy Director, Center for Minority Farmers. Phone: 202-205-9730; E-mail: denis.ebodaghe@usda.gov. In his absence, contact Patricia McAleer at 202-401-2635; pmcaleer@csrees.usda.gov for Small Farm Program information.

FUNDING

FY2008 Budget –Continuing resolution effective until December 14, 2007.

Competitive Funding: The CSREES Competitive Grants Programs challenge the nation's top researchers and educators to identify, solve, and put into practice solutions to problems that improve the safety, quality, productivity, and security of our food supply, the well-being of animals, humans, the environment and natural resources, and rural and urban communities. Information available at: www.csrees.usda.gov/fo/funding.cfm. Competitive programs particularly relevant to ECS programs and clientele include:

- Risk Management Education, Economic and Community Systems, Economic and Community Systems Unit. The program funds four Regional Centers that award competitive grants annually to those with the expertise to develop and deliver risk mitigation educational materials to producers. Primary contact: Dr. J. Hipp; Phone: 202-720-3605; Email: jhipp@csrees.usda.gov. \$5,000,000 is available annually.
- Sustainable Agriculture Research and Education, Economic and Community Systems Unit. Several types of competitive grants are awarded by four regional administrative

councils. Research and Education grants generally range from \$60,000 to \$150,000; Professional Development grants generally range from \$20,000 to \$90,000, and Producer grants are typically between \$1,000 and \$15,000. More information:

www.sare.org/grants/index.htm

- Outreach and Assistance to Socially Disadvantaged Farmers and Ranchers, Competitive Programs Unit. Primary contact: Dr. Dionne Toombs; phone: 202-401-2138; E-mail: dtoombs@csrees.usda.gov.
- Small and Mid-sized Farms, Small Business Innovation Research Program. Primary contact: Dr. Charles Cleland; phone: 202-401-4002; Email: ccleland@csrees.usda.gov. Total estimated SBIR funding is \$19,000,000 for 2008. Funds available to each program area will be in proportion to the number of proposals received.
- Marketing and Trade, Small Business Innovation Research Program. Primary contact: Dr. Sureshwaran; phone: 202-720-7536; Email: ssreshwaran@csrees.usda.gov. Total estimated SBIR funding is \$19,000,000 for 2008. Funds available to each program area will be in proportion to the number of proposals received.
- Agricultural Prosperity for Small and Mid-sized Farms, National Research Initiative. Primary contact: Dr. Sureshwaran; phone: 202-720-7536; Email: ssreshwaran@csrees.usda.gov. Estimated total program funding is \$5,000,000 in 2008. Highest success rate for grant proposals in NRI—29%.
- Markets and Trade, National Research Initiative. Primary contact: Dr. Sureshwaran; phone: 202-720-7536; Email: ssreshwaran@csrees.usda.gov. Total program funding was \$4,400,000 in 2007. 26% success rate for grant applications.
- Rural Development, National Research Initiative. Primary contact: Dr. Sureshwaran; phone: 202-720-7536; Email: ssreshwaran@csrees.usda.gov. Estimated total program funding is \$5,100,000 in 2008. 22% success rate for grant applicants.

The NRI also has opportunities for agricultural economists, rural sociologists, and other social and behavioral scientists in topics related to:

- Markets for ecosystem services (Program Code 23.1);
- Water resources (Program Code 26.0);
- Economic efficiency of biobased products (Program Code 71.2);
- Social, behavioral and economic factors that influence the adoption of practices to reduce agricultural emissions to the atmosphere (Program Code 28.0);
- Economic costs of food safety regulations and its impacts on trade (Program Code 32.0)
- Social and economic factors that influence obesity (Program Code 31.5);
- Economics of invasive species management (Program Code 51.9); and
- Perception and acceptance of nanotechnology (Program Code 75.0)

To identify all the opportunities available for social sciences within the CSREES grant programs, it is important to review the different program solicitations and contact the relevant National Program Leaders at <http://www.csrees.usda.gov/>.

RFA for our International Science and Education (ISE) competitive grants program has been issued. The ISE supports research, extension, and teaching activities that will enhance the

capabilities of American colleges and universities to conduct international collaborative research, extension and teaching. ISE projects are expected to enhance the international content of curricula; ensure that faculty work beyond the U.S. and bring lessons learned back home; promote international research partnerships; enhance the use and application of foreign technologies in the U.S.; and strengthen the role that colleges and universities play in maintaining U.S. competitiveness. The RFA can be found on the CSREES website at: <http://www.csrees.usda.gov/fo/educationinternationalscience.cfm> The closing date for this program is January 17, 2008.

“Grants.gov”: To simplify and streamline its grant application process, the Federal government has developed grants.gov, an online web portal where applicants can find and apply for Federal government grants. Over 1,000 grant programs are offered by all Federal grant-making agencies. To be sure that you learn of grant opportunities without delay, we encourage you to sign up for grant opportunity notification via "grants.gov"

e-Grants Beginning in FY 2008, CSREES will require electronic submission for all grant applications, including competitive and non-competitive funding opportunities (e.g., NRI grants, special research grants, federal administration grants, and object code 40 funds). Requests for Application (RFAs) for all competitive and noncompetitive funding opportunities will be posted to grants.gov. Each RFA will provide the funding opportunity number and program code that identify the specific CSREES funding opportunity, along with all other application requirements. Applicants must use these codes to apply on grants.gov. SF 424 Research and Related (SF 424 R&R) replaces the application forms previously used by CSREES. These forms can be downloaded from grants.gov. Some RFAs will ask for supplemental information that is not included on the SF 424 R&R. Please note that all supplemental information must be provided as PDF attachments, and that applications that do not comply with this requirement will not be accepted by the agency. If you have questions or concerns about the electronic application process, please contact the program leader listed in the RFA or the Grants.gov Contact Center at support@grants.gov or 1-800-518-4726.

Peer Review and Grants Panels: The integrity of competitive programs depends upon the fairness and scientific skill of peer reviewers and panelists from universities, government, and profit and non-profit organizations. Faculty are encouraged to participate in this process as peer reviewers or as panel members. Involvement in panels increases a participant’s knowledge of agency programs and processes, encourages collaboration between parties, and advances research, education, and extension in agriculture. To be considered, please send an e-mail to newreviewer@csrees.usda.gov.

INTERACTION WITH THE LAND-GRANT PARTNERSHIP

National Program Leader Liaison to the States: The primary role of the State Liaisons is to serve as a resource and information conduit for the Land Grant College and University System. Liaisons will engage in dialogue and information exchange with the states about issues and concerns that warrant attention. The two liaisons assigned to a state are expected to serve 3-5 years. They will provide e-mail and phone contacts to key personnel at that state’s Land Grant institutions; will review the integrated (AES and CES) annual plan of work for the state; will arrange a visit to the campuses each year if possible; and will meet with Ag Experiment Station, Academic Programs and Extension Service directors or designees and staff to provide briefings about CSREES business, programs, and administration/management. A list of current state liaisons is available at: www.csrees.usda.gov/business/other_links/npl_liaisons.pdf

CSREES One Solution: The One Solution initiative is designed to centralize and standardize reporting to CSREES through a web-based “one-stop shop” for report submission and internal staff review and synthesis. This CSREES Information System (CIS) will decrease the burden of reporting and increase the quality of data by providing better guidance to grantees and internal review of reports. CIS will maintain the legacy of information collected over the years and will be implemented incrementally beginning with the CRIS Transition Standard Report with planned deployment in 2007. CIS is expected to be fully operational within 2-3 years. See: www.csrees.usda.gov/onesolution

Development of Grant Program for Specialty Crops: USDA continues to develop a coordinated plan to address the needs of specialty crop industries. As part of that process, CSREES has developed a white paper outlining how a competitive grant program for specialty crops might be designed. There is no intent to develop a proposed RFA at this point. Should funding become available, that process will take place separately. To review a white paper on the topic, contact Tom Bewick (tbewick@csrees.usda.gov).

Multistate Research Committees: CSREES representatives liaise with scientists from Land-grant institutions through multistate research committees to promote research and extension activities with regional or national benefits. These committees enable teams of scientists from various states and disciplines to collaborate on research and extension activities, share results and procedures, and minimize duplication of effort. In some cases, committees may coordinate the writing of summary reports or develop common procedures and practices. A list of Multistate committees focusing chiefly on marketing, farm management, and public affairs is available at: www.csrees.usda.gov/nea/economics/part/agmarketing_part_committees.html

MULTISTATE ECONOMICS RESEARCH COMMITTEES AND CSREES REPRESENTATIVES		
REGION NUMBER	COMMITTEE TITLE	CSREES REP(S)
NC506	Sustainable Biorefining Systems for Corn in the North Central Region http://lgu.umd.edu/lgu_v2/homepages/home.cfm?trackID=9256	Hipple
NC 1100	Rural Development, Work & Poverty in North Central Region www.ag.iastate.edu/centers/rdev/projects/nc1100-poverty/	Maggard
NC 1013	Economic & Psychological Determinants of Household Savings Behavior www.lgu.umd.edu/lgu_v2/homepages/home.cfm?trackID=3374	Schuchardt
NC 1014	Agricultural & Rural Finance Markets in Transition www.lgu.umd.edu/lgu_v2/homepages/home.cfm?trackID=2974	Schuchardt
NC 1016	Economic Assessment of Changes in Trade Arrangements, Bio-terrorism Threats & Renewable Fuels Requirements on the U.S. Grain & Oilseed Sector www.lgu.umd.edu/lgu_v2/homepages/home.cfm?trackID=5455	Bahn
NC 1030	Family Firms & Policy http://nimss.umd.edu/homepages/home.cfm?trackID=7857	Schuchardt
NC 1034	Impact Analysis & Decision Strategies for Agricultural Research http://ag.arizona.edu/arec/nc1003/	Bahn
NC 1033	Local Food Choices, Eating Patterns, and Population Health (NC1001) http://www.nimss.umd.edu/homepages/home.cfm?trackID=8096	Maggard Thomas
NC 1036	Research & Education Support for Renewal of American Agriculture of the Middle www.lgu.umd.edu/lgu_v2/pages/showInfo.cfm?trackID=7898	Bahn
NCAC 012	Agricultural Economics http://lgu.umd.edu/lgu_v2/homepages/home.cfm?trackID=2030	Hunt
NCAC 013	<i>Rural Sociology</i> http://lgu.umd.edu/lgu_v2/homepages/home.cfm?trackID=2031	Maggard
NCAC 024	<i>Agricultural Education Research</i> http://lgu.umd.edu/lgu_v2/homepages/home.cfm?trackID=2037#top	Bahn Hipple
NCAC 023	<i>Fisheries and Wildlife</i> http://nimss.umd.edu/homepages/home.cfm?trackID=2036	Hunt
NCCC 052	<i>Family Economics</i> http://nimss.umd.edu/homepages/home.cfm?trackID=7036	Schuchardt
NCCC 065	Social Change in the Marketplace: Producers, Retailers, Consumers www.lgu.umd.edu/lgu_v2/homepages/home.cfm?trackID=1986	Hipp

REGION NUMBER	COMMITTEE TITLE	CSREES REP(S)
NCCC 134	<i>Applied Commodity Price Analysis, Forecasting, & Market Risk Management</i> www.lgu.umd.edu/lgu_v2/homepages/home.cfm?trackID=6797 www.lgu.umd.edu/lgu_v2/pages/showInfo.cfm?trackID=6797&CFID=722031&CFTOKEN=64191213	Bahn
NCDC 209	Bioenergy and Bioproducts Committee http://nimss.umd.edu/homepages/home.cfm?trackID=8796	Hipple
NCERA 194	Improving Management & Effectiveness of Cooperatively Owned Business Organizations www.lgu.umd.edu/lgu_v2/homepages/home.cfm?trackID=3354	Hipp
NE 505	Private Strategies, Public Policies, and Food System Performance http://lgu.umd.edu/lgu_v2/pages/showInfo.cfm?trackID=9677&CFID=10436332&CFTOKEN=60544405	Bahn
NE 1011	Rural Communities, Rural Labor Markets and Public Policy http://lgu.umd.edu/lgu_v2/homepages/home.cfm?trackID=1375	Maggard
NE 1012	Sustaining Local Food Systems in a Globalizing Environment: Forces, Responses, Impacts http://nimss.umd.edu/homepages/home.cfm?trackID=1374	Maggard Thomas
NE 1029	Rural Change: Markets, Governance and Quality of Life http://lgu.umd.edu/lgu_v2/homepages/home.cfm?trackID=8776	Maggard
NECC 063	Research Committee on Commodity Promotion www.nec63.org/what.html	Bahn
NEERA 1000	Northeast Pasture Consortium http://nimss.umd.edu/homepages/home.cfm?trackID=8517	Auburn Dobrowolski
S 1016	Impacts of Trade & Domestic Policies on Competitiveness & Performance of Southern Agriculture www.lgu.umd.edu/lgu_v2/homepages/home.cfm?trackID=4394	Bahn
S 1019	Fruit & Vegetable Marketing Innovations & Demand Assessment www.lgu.umd.edu/lgu_v2/pages/showInfo.cfm?trackID=5114&CFID=14598575&CFTOKEN=26756065	Bahn
S 1021	<i>Managing & Marketing Environmental Plants for Improved Production, Profitability & Efficiency</i> www.lgu.umd.edu/lgu_v2/pages/showInfo.cfm?trackID=6156&CFID=14598575&CFTOKEN=26756065	Bahn Green
SAC 007	Agricultural Economics & Rural Sociology www.lgu.umd.edu/lgu_v2/pages/showInfo.cfm?trackID=4379&CFID=14598575&CFTOKEN=26756065	Hunt Maggard
SCC 076	Economics and Management of Risk in Agriculture and Natural Resources http://lgu.umd.edu/lgu_v2/homepages/home.cfm?trackID=6278	Hoffman Johnson
SERA 015	Competitiveness and Sustainability of the Southern Dairy Industry (S-217) http://nimss.umd.edu/homepages/home.cfm?trackID=1666	Auburn Eastwood
SERA030	Southern Natural Resource Economics Committee http://nimss.umd.edu/homepages/home.cfm?trackID=6576	Hunt
SERA 035	Delta Region Farm Management and Agricultural Policy Working Group http://lgu.umd.edu/lgu_v2/homepages/home.cfm?trackID=7656	Ebodaghe

REGION NUMBER	COMMITTEE TITLE	CSREES REP(S)
W1001	Population Change in Rural Communities http://nimss.umd.edu/homepages/home.cfm?trackID=1095	Hipple
W 1004	Marketing, Trade & Management of Fisheries & Aquaculture Resources www.lgu.umd.edu/lgu_v2/homepages/home.cfm?trackID=4074	Jensen Bahn
W2133	Benefits and Costs of Natural Resources Policies Affecting Public and Private Lands http://www.nimss.umd.edu/homepages/home.cfm?trackID=8676	Hunt
W 1177	<i>Enhancing the Competitiveness of U.S. Meats</i> www.lgu.umd.edu/lgu_v2/homepages/home.cfm?trackID=1214 http://lgu.umd.edu/lgu_v2/pages/showInfo.cfm?trackID=1214&CFID=4783785&CFTOKEN=87251950	Bahn
W 1190	Interfacing Technological, Economic & Institutional Principles for Managing Inter-sector Mobilization of Water www.lgu.umd.edu/lgu_v2/pages/showInfo.cfm?trackID=5274&CFID=14598575&CFTOKEN=26756065	Hunt O'Neill
W1192	Economic, Social, and Ecological Issues of Rangeland Fragmentation that Affect Rangeland Sustainability and Rural Communities http://nimss.umd.edu/homepages/home.cfm?trackID=8456	Hunt Dobrowski
WERA 101	<i>Assessing China as Market & Competitor</i> www.china.wsu.edu/	Bahn
WERA 072	Agribusiness Research Emphasizing Competitiveness www.lgu.umd.edu/lgu_v2/homepages/home.cfm?trackID=5414	Hipp
WERA 1001	Reduction of Error in Rural & Agricultural Surveys www.lgu.umd.edu/lgu_v2/pages/showInfo.cfm?trackID=1754&CFID=14598575&CFTOKEN=26756065	Hipp
WERA 1004	Agricultural & Community Development in American Pacific www.lgu.umd.edu/lgu_v2/pages/showInfo.cfm?trackID=4254&CFID=14598575&CFTOKEN=26756065	Maggard Auburn Tupas
WERA 1005	Western Rural Development http://lgu.umd.edu/lgu_v2/homepages/home.cfm?trackID=7156	Maggard

POLICY AND PLANNING

Current CSREES, REE, and USDA Strategic Plans - www.csrees.usda.gov (go to About Us)

CREATE-21 - www.CREATE-21.org

A SCIENCE ROADMAP FOR AGRICULTURE: UPDATE 2006

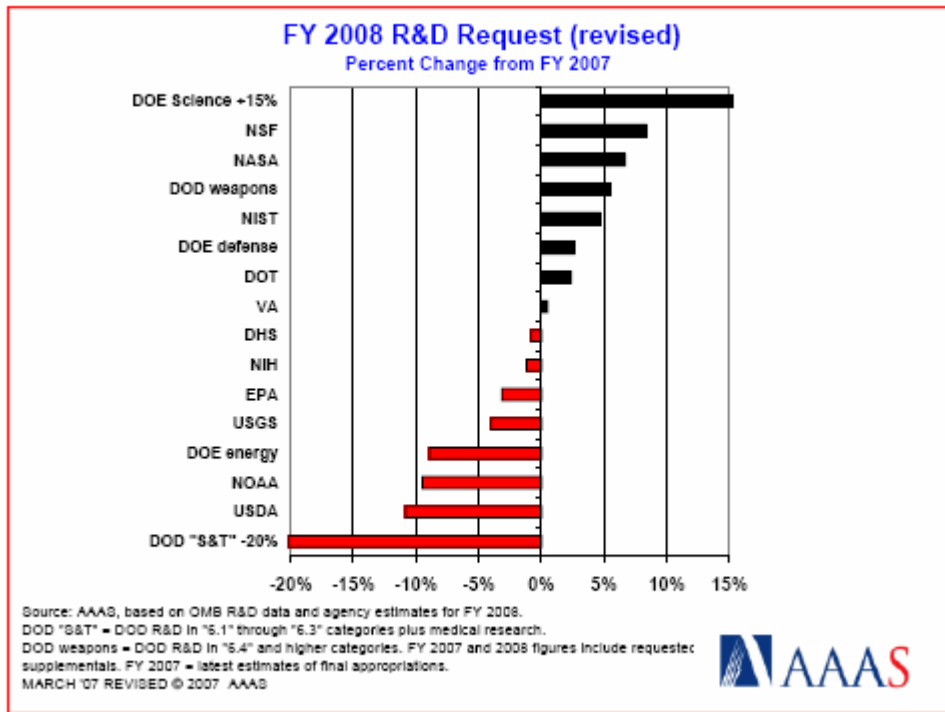
http://www.cals.ncsu.edu/escop/Roadmap%20Update_2006,%20read%20version.pdf

CSREES ADMINISTRATOR'S REVIEW OF AGENCY RESEARCH, EDUCATION, AND EXTENSION PORTFOLIOS

<http://www.csrees.usda.gov/business/reporting/portfolios.html>

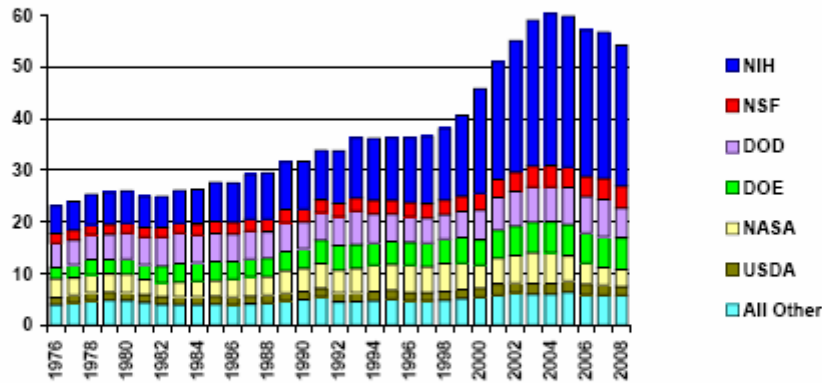
For further information contact Franklin E. Boteler, CSREES Deputy Administrator, Economic and Community Systems, (202) 720-7947, fboteler@csrees.usda.gov

FEDERAL FUNDING FOR RESEARCH – TRENDS



Trends in Research by Agency, FY 1976-2008 *

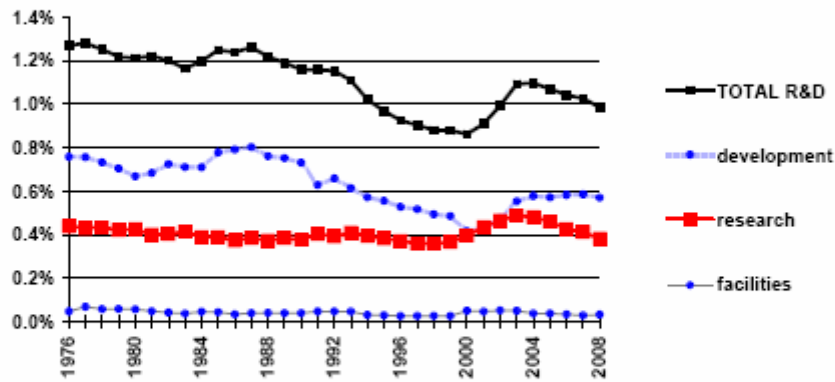
in billions of constant FY 2007 dollars



Source: AAAS analyses of R&D in annual AAAS R&D reports.
 * FY 2008 figures are President's request. 2007 figures are latest AAAS estimates of research in 2007 appropriations. Research includes basic research and applied research. 1976-1984 figures are NSF data on obligations in the Federal Funds survey. MARCH '07 REVISED © 2007 AAAS



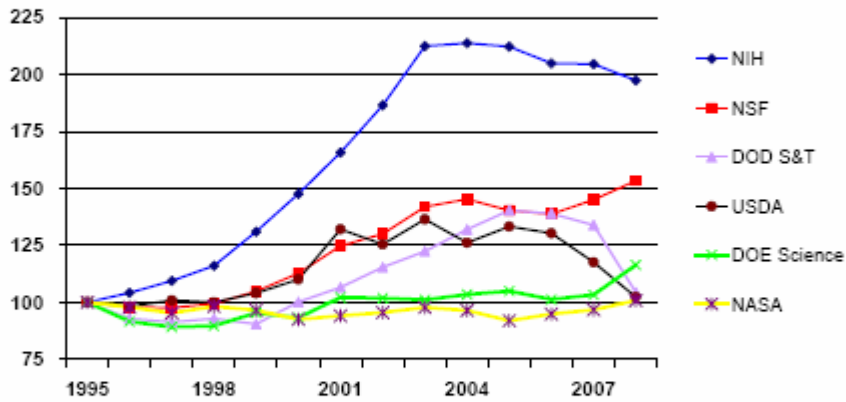
Trends in Federal R&D as % of GDP, FY 1976-2008



Source: AAAS analyses of R&D in annual AAAS R&D reports.
 FY 2008 figures are President's request. R&D includes conduct of R&D and R&D facilities. Data to 1984 are obligations from the NSF Federal Funds survey. GDP figures are from OMB, Budget of the U.S., Government FY 2008.
 MARCH '07 REVISED © 2007 AAAS



Trends in Federal R&D, FY 1995-2008*
 selected agencies in constant dollars, FY 1995=100



Source: AAAS analyses of R&D in AAAS Reports VIII-XXXII.
 * FY 2008 figures are President's request. FY 2007 figures are latest AAAS estimates of FY 2007 appropriations.
 R&D includes conduct of R&D and R&D facilities.
 APRIL '07 REVISED © 2007 AAAS

